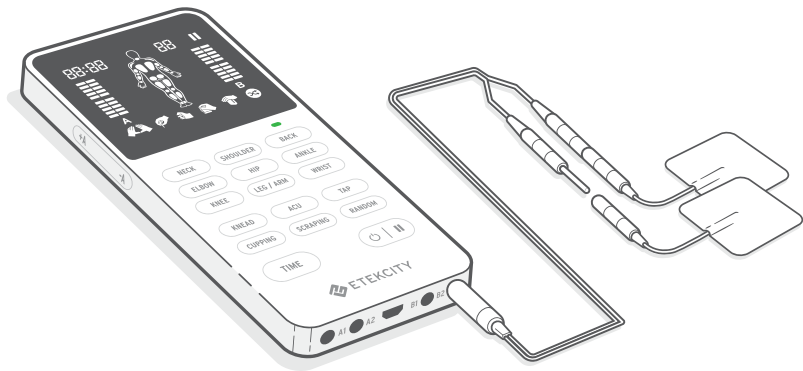




TENS Unit

Model: ETU-134

User Manual



Thank you for purchasing the TENS Unit by Etekcity.

If you have any questions or concerns, please reach out to our helpful Customer Support Team at **support@etekcity.com**. We hope you enjoy your new TENS Unit!

Table of Contents

Package Contents	3
Specifications	4
Safety Information	6
Function Diagram	11
Digital Display	12
Controls	13
Getting to Know Your TENS Unit	14
• Controlling Pain	14
• Length and Intensity	15
• Using the TENS Unit	16
- Electrode Placement Guide	16
- Treatment	19
Maintenance	21
Troubleshooting	24
Glossary of Symbols	27
Warranty Information	37
Customer Support	40

Package Contents

1 x TENS Unit
2 x Electrode Pads (40 x 40 mm)
4 x Electrode Pads (50 x 50 mm)
2 x Electrode Pads (50 x 100 mm)
4 x Lead Wires
1 x Micro USB Cable
1 x User Manual
1 x Quick Start Guide
1 x Storage Bag

Specifications

Frequency	1–100Hz
Pulse Width	70–300 μ s
Output Voltage	0–60V \pm 20% (at 1000 Ω load)
Output Intensity Level	0–20 levels
Electrode Connection Type	Pigtail
Operation Time	10–60 minutes
Dimensions	5.5 x 2.5 x 0.6 in / 138.8 x 63.3 x 15.5 mm
Weight	3.2 oz / 96 g
Operating Environment	Temperature: 41°F–104°F / 5°C–40°C Relative Humidity: 30–75% Atmospheric Pressure: 700hPa–1060hPa
Transport and Storage Environment	Temperature: 14°F–131°F / -10°C–55°C Relative Humidity: 10–90% Air Pressure: 700hPa–1060hPa

Suggest Adapter	Input: 100–240V~, 50/60 Hz, 0.2A Output: DC 5V, 300mA
Battery Type	3.7V, 250mAh Li-ion battery
Rated Power	4.2V
Charging Time	3 hours
Automatic Shutoff	3 minutes
Service Life	TENS Unit: 3 years Electrodes: 10–15 uses
IP Code	IP22
Classification of ME Equipment	Internally Powered (Operating) / Class II (Charging) / Continuous Operation

READ AND SAVE THESE INSTRUCTIONS

Safety Information

Please read and follow all instructions and safety guidelines in this manual.

Contraindication

- **Do not** use the TENS unit if you have or use cardiac pacemakers, implanted defibrillators, respirators, electrocardiographs, or any implanted metallic or electronic devices, including any electronic life support. This can cause electric shock, burns, electrical interference, or even death.

Warnings

- **Always** check the TENS unit and the electrode pads for damage before using. **Do not** use the TENS unit or electrodes if they are damaged in any way.
- You should consult your physician if:
 - You have never used a TENS unit before. The TENS unit may cause lethal disturbances to heart rhythm in certain individuals.
 - You have had or are using medical or physical treatment for your pain.
 - Your pain worsens or continues for more than 5 days.
 - You experience adverse reactions from the TENS unit.
- **Do not** use the TENS unit on someone with a cognitive impairment (e.g., dementia, Alzheimer's disease). People who have a cognitive impairment may be unable to use the TENS unit according to the instructions and may become agitated by the treatment.
- **Do not** use the TENS unit on children, as it has not been evaluated for pediatric use.

Warnings (cont.)

- Keep the TENS unit out of reach of children. The unit contains small pieces that may be swallowed, and the cable may cause strangulation.
- **Do not** use the TENS unit on your eyes, mouth, face, the side of your neck (the carotid sinus), any area of the throat (front of the neck), or your across your heart. This could cause severe muscle spasms that may result in airway closure, breathing difficulties, or adverse effects on heart rhythm or blood pressure.
- **Do not** use the TENS unit on your chest. The TENS unit uses electrical currents. Using the TENS unit on your chest may cause rhythm disturbances to your heart, which could be lethal.
- Use the TENS unit **only** on normal, intact, clean, and healthy skin.
- **Do not** use the TENS unit over open wounds or rashes, or over swollen, red, infected, or inflamed areas or skin eruptions (e.g., phlebitis, thrombophlebitis, varicose veins).
- **Do not** use the TENS unit over, or close to, cancerous lesions.
- **Do not** place the electrodes inside body cavities, such as the mouth. This may cause irritation, burns, or electric shock. The TENS unit is not designed for internal application.
- **Do not** use the TENS unit in the presence of electronic monitoring equipment (e.g., cardiac monitors, ECG alarms). This equipment may not operate properly when the TENS unit is in use.
- **Do not** use the TENS unit in the bath or shower. The TENS unit is not waterproof, and a humid environment may damage it, resulting in personal injury.
- **Do not** use the TENS unit while sleeping.
- **Do not** use the TENS unit while driving, operating machinery, or during any activity in which electrical stimulation can put you at risk of injury.
- **Do not** modify the TENS unit or the electrodes. This could cause improper functioning.

Warnings (cont.)

- The condition of your electrode pads may affect the safety and effectiveness of the treatment. Take the following into account:
 1. If the electrode pads are too small or not correctly applied, this may result in discomfort or skin burns.
 2. If you do not know if the electrode pads can be used with the TENS unit, contact **Customer Support** (see page 40).
- **Do not** use in places with flammable or explosive gases.

Precautions

- The TENS unit is not effective for pain of central origin, including headaches.
- The TENS unit is not a substitute for pain medications and other pain management therapies.
- The TENS unit has no curative benefits.
- The TENS unit treatment may not be effective for everyone. Consult your physician or healthcare

- professional to find out if TENS will work for you.
- The long-term effects of electrical stimulation are unknown.
- Because the effects of electrical stimulation on the brain are unknown, **do not** use the TENS unit on your head.
- Electrical stimulation and the pads' conductive gel may cause skin irritation or hypersensitivity. The irritation can usually be reduced by alternative pad placement.
- If you have a suspected or diagnosed heart disease, follow precautions from your physician.
- If you have suspected or diagnosed epilepsy, follow precautions from your physician.
- **Do not** use if you may have internal bleeding, such as from an injury or a fracture.
- If you had surgery recently, consult your physician before using the TENS unit. Using the TENS unit may disrupt the healing process.
- Use caution when you use the TENS unit over areas of skin that lack sensation.

Precautions (cont.)

- The impact of using the TENS unit during pregnancy is unknown and may be unsafe. Use caution when you use the TENS unit over the uterus during pregnancy or menstruation.
- **Do not** use plaster or tape to attach the electrodes to the skin.
- **Do not** let the electrode pads touch metal objects, such as belt buckles or jewelry.
- Use the TENS unit **only** with the electrodes and accessories recommended by Etekcity.
- **Always** end the TENS unit treatment before you unplug the TENS unit or the electrodes. If you do not end the treatment, you may get a harmless but unpleasant sensation in your fingers.
- **Do not** use on your spine or backbone.
- **Do not** place electrodes on both legs or feet at the same time. **Only** treat 1 at a time.

General Recommendations

- **Do not** use the TENS unit for any other purpose than what it is intended for.
- The TENS unit is designed for use by a single adult person. For hygienic reasons, electrodes should not be shared.
- **Do not** use the TENS unit if you are connected to high-frequency surgical equipment. This may result in burns on the skin under the electrodes and may damage the TENS unit.
- **Do not** use the TENS unit within 3.3 ft / 1 m from shortwave or microwave medical equipment. Close proximity to this equipment may cause unstable TENS unit output.
- Although you can use the TENS unit indoors and outdoors, it cannot withstand all weather conditions.
- The electrode pads have a limited shelf life. Please check the packaging for the use-by date before use. **Do not** use expired electrode pads.
- **Always** use and store the electrodes according to the instructions.

General Recommendations (cont.)

- The TENS unit should be kept at least 3.3 ft / 1 m from electric equipment such as TVs, radios, electromagnetic furnaces, to avoid likely electromagnetic interference.
- **Do not** use while charging. Unplug the power cord before using.
- Not for commercial use. Household use **only**.

General Risk

- The TENS unit only treats symptoms. It reduces the feeling of pain, but it does not cure the cause of the pain. Pain may be a signal from your body that some part of your body is damaged and needs attention.

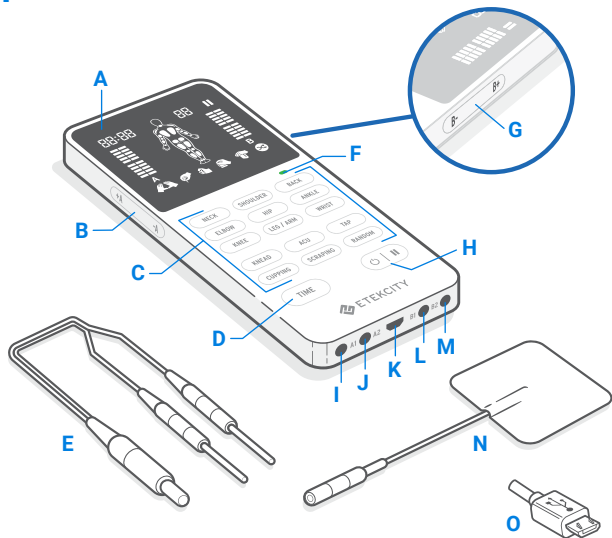
Specific Risks

- You may get skin irritation and burns on the skin under the electrodes.
- You may get a headache or other pain if you use the TENS unit near your eye, or on your head or face.
- You may experience muscle exhaustion or muscle soreness after extended use on the same muscles (more than 30 minutes a session, up to 3 times a day).

SAVE THESE INSTRUCTIONS

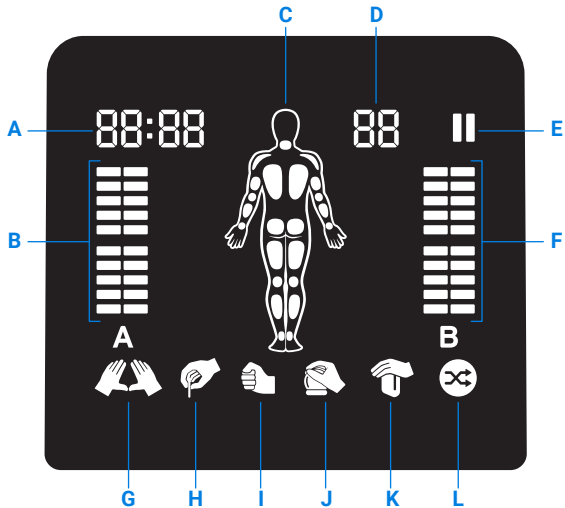
Function Diagram

- A.** Display
- B.** A Channel Intensity Increase/Decrease
- C.** Therapy Modes [15]
- D.** Time Button
- E.** Lead Wires
- F.** Battery Indicator
- G.** B Channel Intensity Increase/Decrease
- H.** Power/Pause Button
- I.** A1 Output
- J.** A2 Output
- K.** Micro USB Port
- L.** B1 Output
- M.** B2 Output
- N.** Electrode Pad
- O.** Micro USB Cable





Digital Display

- A. Time Display
- B. A Channel Intensity Level
- C. Body Part Icons
- D. Program Number
- E. Pause Icon
- F. B Channel Intensity Level
- G. Kneading Icon
- H. ACU (Acupuncture) Icon
- I. Tap Icon
- J. Cupping Icon
- K. Scraping Icon
- L. Random Icon



Controls

 |  Press to turn on. Press again during treatment to pause or continue. Press and hold for 2 seconds to turn off.

TIME Press to increase time in 10-minute increments.

Note: When you first turn on the TENS unit, the default time will be 20 minutes. Lowering both intensities to 0 will reset the timer.

Therapy Modes

Body Part: Press to select which area of the body to focus on. The selection will flash on the display and show the corresponding number.

- | | | |
|-------------|----------|------------|
| 1. Neck | 4. Elbow | 7. Knee |
| 2. Shoulder | 5. Hip | 8. Leg/Arm |
| 3. Back | 6. Ankle | 9. Wrist |

Massage Type: Press to select the massage type. The selection will flash on the display and show the corresponding number.

- | | | |
|-----------|-------------|--------------|
| 10. Knead | 12. Tap | 14. Scraping |
| 11. ACU | 13. Cupping | 15. Random |

Note:

- You can only use 1 therapy mode at a time.
- The TENS unit will automatically default to the last mode selected.

Getting to Know Your TENS Unit

Transcutaneous Electrical Nerve Stimulation (TENS) units are used for temporary relief of sore and aching muscles in the body due to exercise or strenuous activities such as normal household work activities. The 4 channels deliver tiny electrical impulses sent through the skin to the nerves to help manage pain by signaling the body to produce endorphins, the body's natural pain killer.

The TENS Unit is designed to be used for temporary relief of pain associated with sore and aching muscles in the shoulders, waist, back, neck, upper extremities (arms) and lower extremities (legs) due to strain from exercise or normal household work activities. It should be applied to normal, healthy, and dry skin of adult patients.

Controlling Pain

The TENS unit works best on acute pain because it is localized. Acute pain occurs in 1 area for less than 3 months. If you have chronic pain (often including experiencing pain in more than 1 area and for longer than 6 months), then the chronic pain may be compounded by other issues that the TENS unit cannot address.

The TENS unit cannot cure pain or the original cause of the pain. It can only provide temporary relief or reduction of pain.

Use the TENS unit as soon as your pain begins. Start with 1 session. If you address your pain early, it may prevent the pain from becoming worse.

Length and Intensity

The TENS unit should be used once a day, for up to 30 minutes for each treatment area. Depending on the level of pain, you may use the TENS unit up to 3 times a day for a maximum of 90 minutes total. **Do not** use more than 3 times a day or 90 minutes total per treatment area.

When turning off the TENS unit, **always** turn it off with pads still adhered to skin. Rate your pain between 1 (low) and 20 (high) to check your progress.

Intensity is based upon your level of comfort. When learning how to use the TENS unit, begin with a low intensity and use the TENS unit for a short period of time. Use caution when working with higher intensities at the limit of what you can tolerate. **Do not** exceed your comfort level.

Stop using the TENS unit if:

- Pain has reduced or stopped.
- You experience an adverse reaction such as skin irritation, redness, burns, headaches, other painful sensations, or any increased discomfort.
- Your pain becomes chronic and severe, or continues for more than 5 days.

Note:

- If pain does not improve and you become sore from overuse, stop using and **do not** treat those areas for 2 days. If this happens again, reduce the treatment time and intensity settings for future treatments.
- If you feel pain, dizziness, discomfort, or nausea while using the TENS unit, call your physician or medical practitioner.

Using the TENS Unit

Note: Before first use, fully charge the TENS unit (see **Charging the Battery**, page 21).

Electrode Placement Guide

1. Prep the area by cleaning your skin. Wash and pat dry.

Note:

- Before placing electrodes on skin, make sure the TENS unit is completely turned **OFF** or the intensities are set to 0.
- **Do not** allow the pads to touch each other.
- **Never** remove the self-adhesive pads from the skin while the TENS unit is turned on.

2. Gently peel the pads from the plastic and place at least 2 in / 5 cm apart on clean, dry, and healthy skin near or surrounding the area of pain.



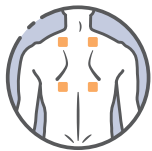
Hip: Pain in the hip area is often the result of wearing of the joints (arthrosis). Pain in the hip region may be treated with the application of electrodes above and below the joint. In addition, pain may also radiate outwards, e.g. towards the groin. In this case, an electrode is applied to the main pain point on the hip while a second electrode is applied in the direction that the pain is radiating.



Neck: Attach both sets of pads to the back of the neck. **Do not** place on carotid artery or throat.



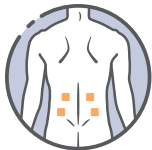
Upper Arm: Attach both electrodes on either side where you feel pain.



Upper Back: Attach both sets of electrodes to the upper back with the backbone in the center. **Do not** place on the backbone or spine.



Elbow: Attach both sets of electrodes on either side of the joint where you feel pain.



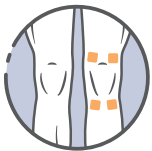
Lower Back/Lumbar: Attach both sets of electrodes to the lower back with the backbone in the center. **Do not** place on the backbone or spine.



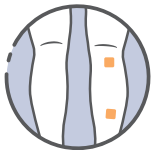
Shoulder: Attach 1 set of electrodes in front and 1 set on the back of the muscle where you feel pain. Also attach both pads on the shoulder according to your pain.



Wrist/Hand: Attach both sets of electrodes to the hand where you feel pain.



Knee/Joint: Attach both sets of electrodes above or above and below the joint with pain.



Calf: Attach both electrodes on the calf or leg where you feel pain.



Ankle/Foot:

- For pain on the outside of the ankle or foot, attach electrodes above and below the pain point.



- For pain on the inside of the ankle or foot, attach 1 electrode above the ankle and 1 in the center of the sole of your foot.

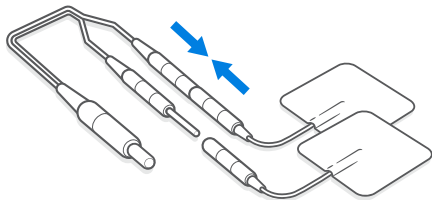
Note:

- **Do not** place electrodes on both legs or feet at the same time. Only treat 1 at a time.
- **Only** place electrodes according to Electrode Placement Guide.

Treatment

1. Connect the lead pins to the connectors on the electrodes. Each wire has 2 leads with pin-inserted connectors. Make sure the metal on the pins is not exposed.

Note: This TENS unit has 4 independent channels (A1, A2, B1, B2). Make sure you know which channel(s) you want to use before you connect wires to the TENS unit.




2. Insert the lead wire plugs into the sockets on the TENS unit. You can use up to 4.



3. Place the electrodes on your skin (with the TENS unit turned OFF).

Note: The device mode only works when both pads are placed on your skin at the same time.

4. Press  to turn on the TENS unit. Wait 2 seconds for the TENS unit to fully turn on.
5. Select 1 of 15 therapy modes. The selected icon will flash on the screen and show the corresponding number.

6. Optionally, press **TIME** to increase the time by 10-minute increments for up to 60 minutes . The time will show on the screen. The default time is 20 minutes. Lowering both intensities to 0 will reset the timer.
7. Press **+A** or **B+** to begin the treatment. Press again to increase the intensity.

Note:

- Intensity can be adjusted independently for A and B channels.
- Press **+ / -** repeatedly on the left side and right side to raise or lower intensity for channel A (A1 and A2 output) and channel B (B1 and B2 output).

Caution:

- **Do not** remove electrode pads by pulling on the wire. Peel gently from any corner.

- **Do not** place electrodes on the carotid artery, throat, backbone, or spine.
- If you feel pain, dizziness, discomfort, or nausea while using the TENS unit, stop using immediately and call your physician or medical practitioner. **Do not** exceed your comfort level.

8. Press **||** to pause the treatment at any time. Press **||** again to resume.

Note: If the TENS unit is inactive for 3 minutes, it will turn off automatically.

9. Press and hold **⏻** for 2 seconds to turn off the TENS unit at any time.
10. Unplug the electrodes from the TENS unit. Then peel the pads off the skin gently and replace on the plastic film. **Never** remove pads from skin before turning off the TENS unit.

Maintenance

Charging the Battery



The battery indicator will flash orange/yellow when the TENS unit needs to be charged. On a full charge, the battery will last approximately 1 week when used for 20 minutes a day at level 10 intensity.

1. Insert the micro USB cable into the micro USB port charging socket on the TENS unit.
2. Plug the micro USB cable into a DC 5V adapter and plug into an outlet. You can also plug the cable into a powered USB outlet.
3. The TENS unit is fully charged when the indicator turns solid green.

Note:

- Charging time is about 3 hours.
- For best results, fully charge your TENS unit before using.
- Adapter is not provided, always use with IEC 60601-1 or IEC 60950-1 approved adapter.

Warning:

- If batteries leak and come into contact with skin or eyes, wash immediately with water.
- The life of any rechargeable battery depends on the number of recharge/rundown cycles it undergoes and how these cycles are performed. The service life of the rechargeable battery is more than 300 recharge/rundown cycles. Whenever the TENS unit is not used for a long period of time, recharge the battery monthly.
- The battery cannot be replaced. If the battery no longer holds a charge, contact **Customer Support** (see page 40).

Cleaning the TENS Unit

1. Turn the TENS unit off and disconnect the lead wires.
2. Clean gently with a damp cloth and wipe dry immediately.

Note:

- **Do not** use chemicals or detergents to clean the unit.
- **Do not** let water get into the TENS unit.
- The TENS unit and the accessories do not require sterilization.

Cleaning the Electrode Pads

Wash the pads when the adhesive becomes dirty and the pads are difficult to attach. Electrodes may be washed and reused 10–15 times.

1. Turn the TENS unit off and disconnect the lead wires from the pads.
2. Rinse the pads under cold water for several seconds, using your fingers to remove any dirt or debris.
3. Allow the adhesive to air dry completely.

Note:

- **Do not** use chemicals, detergents, or soap to clean the electrode pads.
- **Do not** use a sponge, cloth, or any sharp object on the adhesive side of the pads.

Replacing the Electrode Pads

The life of an electrode may vary due to skin condition, the frequency of washing, and storage. You may need to replace the electrodes if:

- They do not stick to skin.
- They are ripped or broken.

Only use electrodes that are the same size as the electrodes that come with the TENS unit and have a pigtail connection. **Always** use the electrodes that are legally marketed in the US under 510(K) procedure. Using electrodes that are larger may reduce the effect of the stimulation while smaller electrodes may increase the chance of skin irritation or burns.

Storage

- Turn the device off and remove lead wires from the TENS unit.
- Place the pads on the plastic film, wrap the lead wires, and store in a sealed package.
- Store in a dry, clean place.
- **Do not** store in extreme temperatures. Storage environment should be 14°F–131°F / -10°C–55°C, 10–90%RH.
- Keep away from heat sources and direct sunlight.
- **Do not** store in places that can be easily reached by children.
- **Do not** leave the TENS unit exposed to any chemical solvent, lint, or dust.
- When not in use for a long period of time, recharge the battery monthly.

Troubleshooting

Problem	Possible Solution
The TENS unit won't turn on.	Make sure the TENS unit is charged.
Electrical stimulation is weak or I cannot feel any stimulation.	Intensity is too low. Raise the intensity (see Using the TENS Unit , page 16).
	Electrode pads may be dried out or dirty. Wash or replace with new pads.
	Lead wire may be old, worn, or damaged. Stop using and contact Customer Support (see page 40).
Electrical stimulation is uncomfortable.	Intensity is too high. Lower the intensity (see Using the TENS Unit , page 16).
	Electrode pads may be too close together. Reposition them at least 2 in / 5 cm apart.
	Electrode pads may be too small. Replace with pads that have a diameter no smaller than 2 in / 5 cm.
	Make sure you're following the instructions correctly (see page 16).

Troubleshooting (cont.)

Problem	Possible Solution
Electrical stimulation is inconsistent.	Check the wires and make sure they are plugged in securely.
	Turn down the intensity and rotate the lead plug in the socket 90°.
	Replace the lead wire.
Electrical stimulation is ineffective.	Electrodes may be placed incorrectly (see Electrode Placement Guide , page 16). Reposition the electrodes.
	Contact your physician or medical practitioner.
Skin turns red or there is a stabbing pain.	Using electrodes on the same area every time can cause discomfort. Reposition the electrodes (see Electrode Placement Guide , page 16). Stop using immediately if you feel any more pain or discomfort.
	The electrodes may be damaged, dirty, or may not be attached to the skin properly. Make sure they are clean or replace with new electrodes if necessary.
	You may have sensitive skin. Turn off the TENS unit and stop using immediately.

Troubleshooting (cont.)

Problem	Possible Solution
Output stops during treatment.	The electrodes may have come off. Turn off the TENS unit, then reattach the electrodes and continue the treatment.
	Make sure the lead plug is inserted into the correct output socket.
	Charge the TENS unit.
	Lead wires may be damaged. Stop using and contact Customer Support (see page 40).
The TENS unit runs out of battery too quickly or does not hold any charge.	Contact Customer Support (see page 40).

If your problem is not listed, please contact **Customer Support** (see page 40).

Glossary of Symbols



Type BF Applied Part (The applied part is the electrode).



Refer to instruction manual.



Date of manufacture.

IP22

The first number 2: Protected against solid foreign objects of 12.55 mm and greater.

The second number 2: Protected against vertically falling water drops when tilted up to 15°.



Transportation and storage temperature from 14°F–131°F / -10°C–55°C.



Transportation and storage humidity limits from 10–90%.



Transportation and storage atmospheric pressure limits from 700hPa–1060hPa.

B/N

The B/N code combine with destination country, PO number, date of manufacture and serial number.

IMPORTANT INFORMATION REGARDING ELECTROMAGNETIC COMPATIBILITY (EMC)

- Use of accessories other than those specified or provided by the manufacturer of this equipment could result in increased electromagnetic emissions or decreased electromagnetic immunity of this equipment and result in improper operation.
- Use of this equipment adjacent to or stacked with other equipment should be avoided because it could result in improper operation. If such use is necessary, this equipment and the other equipment should be observed to verify that they are operating normally.
- Portable RF communications equipment (including peripherals such as antenna cables and external antennas) should be used no closer than 12 in / 30 cm to any part of the device, including cables specified by the manufacturer. Otherwise, degradation of the performance of this equipment could result.

- When the operating environment is relatively dry, strong electromagnetic interference usually occurs. At this time, this device may be affected as follows:
 - The device stops output
 - The device turns off
 - The device restarts

The above will not affect the basic safety and essential performance of the device, and the user can use it according to the instructions. If you want to avoid this, please use it according to the environment requirements specified in the manual.

Table 1**Declaration - Electromagnetic Emission**

The device is intended for use in the electromagnetic environment specified below. The customer or the user of device should assure that it is used in such an environment.

Emissions Test	Compliance	Electromagnetic Environment - Guidance
RF emissions CISPR 11	Group 1	The device uses RF energy only for its internal function Therefore, its RF emissions are very low and are not likely to cause any interference in nearby electronic equipment.
RF emissions CISPR 11	Class B	The device is suitable for use in all establishments, including domestic establishments and those directly connected to the public low-voltage power supply network that supplies buildings used for domestic purposes.
Harmonic emissions IEC 61000-3-2	Class A	
Voltage fluctuations/ flicker emissions IEC 61000-3-3	Complies	

Table 2**Declaration - Electromagnetic Immunity**

The device is intended for use in the electromagnetic environment specified below. The customer or the user of device should assure that it is used in such an environment.

Immunity Test	IEC 60601 Test Level	Compliance Level	Electromagnetic Environment - Guidance
Electrostatic discharge (ESD) IEC 61000-4-2	± 8 kV contact ± 2 kV, ± 4 kV, ± 8 kV, ± 15 kV air	± 8 kV contact ± 2 kV, ± 4 kV, ± 8 kV, ± 15 kV air	Floors should be wood, concrete, or ceramic tile. If floors are covered with synthetic material, the relative humidity should be at least 30%.
Electrical fast transient/burst IEC 61000-4-4	± 2 kV for power supply lines ± 1 kV for input/output lines	± 2 kV for power supply lines ± 1 kV for input/output lines	Mains power quality should be that of a typical commercial or hospital environment.
Surge IEC 61000-4-5	± 0.5 kV, ± 1 kV line(s) to lines ± 0.5 kV, ± 1 kV, ± 2 kV line(s) to earth	± 0.5 kV, ± 1 kV line(s) to lines ± 0.5 kV, ± 1 kV, ± 2 kV line(s) to earth	Mains power quality should be that of a typical commercial or hospital environment.

Table 2 (cont.)

<p>Voltage dips, short interruptions and voltage variations on power supply input lines IEC 61000-4-11</p>	<p>0% UT; 0.5 cycle At 0°, 45°, 90°, 135°, 180°, 225°, 270° and 315° 0 % UT; 1 cycle and 70% UT; 25/30 cycles Single phase: at 0° 0% UT; 250/300 cycles</p>	<p>0% UT; 0.5 cycle At 0°, 45°, 90°, 135°, 180°, 225°, 270° and 315° 0 % UT; 1 cycle and 70% UT; 25/30 cycles Single phase: at 0° 0% UT;</p>	<p>Mains power quality should be that of a typical commercial or hospital environment. If the user of the device requires continued operation during power mains interruptions, it is recommended that the device be powered from an uninterruptible power supply or a battery.</p>
<p>Power frequency (50/60 Hz) magnetic field IEC 61000-4-8</p>	<p>30 A/m</p>	<p>30 A/m</p>	<p>Power frequency magnetic fields should be at levels characteristic of a typical location in a typical commercial or hospital environment.</p>
<p>Note: UT is the a.c. mains voltage prior to application of the test level.</p>			

Table 3**Declaration - Electromagnetic Immunity**

The device is intended for use in the electromagnetic environment specified below. The customer or the user of the device should assure that it is used in such an environment.

Immunity Test	IEC 60601 Test Level	Compliance Level	Electromagnetic Environment - Guidance
Conducted RF IEC 61000-4-6	3 V 0.15 MHz to 80 MHz 6 V in ISM and amateur radio bands between 0.15 MHz and 80 MHz	3 V 0.15 MHz to 80 MHz 6 V in ISM and amateur radio bands between 0.15 MHz and 80 MHz	Portable and mobile RF communications equipment should be used no closer to any part of the device than the recommended separation distance calculated from the equation applicable to the frequency of the transmitter. Recommended separation distance $d = 1.2 \sqrt{P}$ 150 KHz to 80 MHz $d = 1.2 \sqrt{P}$ 80 MHz to 800 MHz $d = 2.3 \sqrt{P}$ 80 MHz to 2.7 GHz
Radiated RF IEC 61000-4-3	10V/m 80 MHz to 2.7 GHz	10V/m	where P is the maximum output power rating of the transmitter in watts (W) according to the transmitter manufacturer and d is the recommended separation distance in meters (m). Field strengths from fixed RF transmitters, as determined by an electromagnetic site survey, should be less than the compliance level in each frequency range.

Table 3 (cont.)

Interference may occur in the vicinity of equipment marked with the following symbol:



Note 1: At 80 MHz and 800 MHz, the higher frequency range applies.

Note 2: These guidelines may not apply in all situations. Electromagnetic propagation is affected by absorption and reflection from structures, objects and people.

- A.** Field strengths from fixed RF transmitters, such as base stations for radio (cellular/cordless) telephones and land mobile radios, amateur radio, AM and FM radio broadcast and TV broadcast cannot be predicted theoretically with accuracy. To assess the electromagnetic environment due to fixed RF transmitters, an electromagnetic site survey should be considered. If the measured field strength in the location in which device is used exceeds the applicable RF compliance level above, device should be observed to verify normal operation. If abnormal performance is observed, additional measures may be necessary, such as reorienting or relocating device.
- B.** Over the frequency range 0.15 MHz to 80 MHz, field strengths should be less than 3 V/m.

Table 4

Recommended Separation Distances Between Portable and Mobile RF Communications Equipment and Device

The device is intended for use in an electromagnetic environment in which radiated RF disturbances are controlled. The customer or the user of device can help prevent electromagnetic interference by maintaining a minimum distance between portable and mobile RF communications equipment (transmitters) and device, as recommended below, according to the maximum output power of the communications equipment.

Rated maximum output power of transmitter W	Separation distance according to frequency of transmitter m		
	0.15 MHz to 80 MHz $d = 1.2 \sqrt{P}$	80 MHz to 800 MHz $d = 1.2 \sqrt{P}$	80 MHz to 2.7 GHz $d = 2.3 \sqrt{P}$
0.01	0.12	0.12	0.23
0.1	0.38	0.38	0.73
1	1.2	1.2	2.3
10	3.8	3.8	7.3
100	12	12	23

Table 4 (cont.)

For transmitters rated at a maximum output power not listed above, the recommended separation distance d in meters (m) can be estimated using the equation applicable to the frequency of the transmitter, where P is the maximum output power rating of the transmitter in watts (W) according to the transmitter manufacturer.

Note 1: At 80 MHz and 800 MHz, the higher frequency range applies.

Note 2: These guidelines may not apply in all situations. Electromagnetic propagation is affected by absorption and reflection from structures, objects and people.

Warranty Information

Product	TENS Unit
Model	ETU-134
<i>For your own reference, we strongly recommend that you record your order ID and date of purchase.</i>	
Order ID	
Date of Purchase	

ETEKCITY LIMITED PRODUCT WARRANTY

Register your products at <https://warranty.etekcity.com/warranty> to stay up to date with important product information such as product updates, limited warranties, usage and maintenance recommendations, and notifications concerning safety warnings or product recalls. Registration is not required to claim your limited warranty.

Two (2) Year Limited Consumer Product Warranty

Etekcity Corporation ("Etekcity") warrants that the product shall be free from defects in material and workmanship for a period of 2 years from the date of original purchase ("Limited Warranty Period"), provided the product was used in accordance with its use and care instructions (e.g. in the intended environment and under normal circumstances).

Your Limited Warranty Benefits

During the Limited Warranty Period and subject to this limited Warranty Policy, Etekcity will, in its sole and exclusive discretion, either (i) refund the purchase price if the purchase was made directly from the online Etekcity store, (ii) repair any defects in material or workmanship, (iii) replace the product with another product of equal or greater value, or (iv) provide store credit in the amount of the purchase price.

Who is Covered?

This limited warranty extends only to the original consumer purchaser of the product and is not transferable to any subsequent owner of the product, regardless of whether the product transferred ownership during the specified term of the limited warranty. The original consumer purchaser must provide verification of the defect or malfunction and proof of the date of purchase to claim the Limited Warranty Benefits.

Be Aware of Unauthorized Dealers or Sellers

This limited warranty does not extend to products purchased from unauthorized dealers or sellers. Etekcity's limited warranty only extends to products purchased from authorized dealers or sellers that are subject to Etekcity's quality controls and have agreed to follow its quality controls. Please be aware, products purchased from an unauthorized website or dealer may be counterfeit, used, defective, or may not be designed for use in your country. You can protect yourself and your products by making sure you only purchase from Etekcity or its authorized dealers.

If you have any questions about a specific seller, or if you think you may have purchased your product from an unauthorized seller, please contact our Customer Support via support@etekcity.com.

What's Not Covered?

- Normal wear and tear, including parts that might wear out over time (e.g. batteries, filters, cleaning brush, essential oil pads, etc.).
- If the proof-of-purchase has been altered in any way or is made illegible.
- If the model number, serial number or production date code on the product has been altered, removed or made illegible.
- If the product has been modified from its original condition.
- If the product has not been used in accordance with directions and instructions in the user manual.
- Damages caused by connecting peripherals, additional equipment or accessories other than those recommended in the user manual.
- Damages or defects caused by accident, abuse, misuse, or improper or inadequate maintenance.
- Damages or defects caused by service or repair of the product performed by an unauthorized service provider or by anyone other than Etekcitec.
- Damages or defects occurring during commercial use, rental use, or any use for which the product is not intended.
- If the unit has been damaged, including but not limited to damage by animals, lightning, abnormal voltage, fire, natural disaster, transportation, dishwasher, or water (unless the user manual expressly states that the product is dishwasher safe).
- Incidental and consequential damages.
- Damages or defects exceeding the cost of the product.

Claiming Your Limited Warranty Service in 5 Simple Steps:

1. Make sure your product is within the specified limited warranty period.
2. Make sure you have a copy of the invoice and order ID or proof-of-purchase.
3. Make sure you have your product. DO NOT dispose of your product before contacting us.
4. Contact our Customer Support team via support@etekcity.com.
5. Once our Customer Support team has approved your request, please return the product with a copy of the invoice and order ID.

Sole and Exclusive Remedy

THE FOREGOING LIMITED WARRANTY CONSTITUTES ETEKCITEC CORPORATION'S EXCLUSIVE LIABILITY, AND YOUR SOLE AND EXCLUSIVE REMEDY, FOR ANY BREACH OF ANY WARRANTY OR OTHER NONCONFORMITY OF THE PRODUCT COVERED BY THIS LIMITED PRODUCT WARRANTY STATEMENT. THIS LIMITED WARRANTY IS EXCLUSIVE, AND IN LIEU OF ALL OTHER WARRANTIES. NO EMPLOYEE OF ETEKCITEC CORPORATION OR ANY OTHER PARTY IS AUTHORIZED TO MAKE ANY WARRANTY IN ADDITION TO THE LIMITED WARRANTY IN THIS LIMITED PRODUCT WARRANTY STATEMENT.

Disclaimer of Limited Warranties

TO THE FULLEST EXTENT PROVIDED BY APPLICABLE LAW, EXCEPT AS WARRANTED IN THIS LIMITED PRODUCT WARRANTY POLICY, ETEKCITEC CORPORATION PROVIDES THE PRODUCTS YOU PURCHASE FROM ETEKCITEC CORPORATION "AS IS" AND ETEKCITEC CORPORATION

HEREBY DISCLAIMS ALL WARRANTIES OF ANY KIND, WHETHER EXPRESS OR IMPLIED, STATUTORY, OR OTHERWISE, INCLUDING BUT NOT LIMITED TO ANY WARRANTIES OF MERCHANTABILITY, NON-INFRINGEMENT, AND FITNESS FOR PARTICULAR PURPOSE.

Limitations of Liability

TO THE FULLEST EXTENT PROVIDED BY APPLICABLE LAW, IN NO EVENT WILL ETEKCITY CORPORATION, ITS AFFILIATES, OR THEIR LICENSORS, SERVICE PROVIDERS, EMPLOYEES, AGENTS, OFFICERS, OR DIRECTORS BE LIABLE FOR:

(a) DAMAGES OF ANY KIND ARISING OUT OF OR IN CONNECTION WITH PRODUCTS PURCHASED FROM ETEKCITY CORPORATION IN EXCESS OF THE PURCHASE PRICE PAID BY THE PURCHASER FOR SUCH PRODUCTS, OR

(b) INDIRECT, SPECIAL, INCIDENTAL, CONSEQUENTIAL, OR PUNITIVE DAMAGES EVEN IF ETEKCITY CORPORATION OR ONE OF ITS SUPPLIERS HAS BEEN ADVISED OF THE POSSIBILITY OR LIKELIHOOD OF SUCH DAMAGES. AND REGARDLESS OF WHETHER CAUSED BY TORT (INCLUDING NEGLIGENCE), BREACH OF CONTRACT, OR OTHERWISE. OUR LIABILITY SHALL UNDER NO CIRCUMSTANCES EXCEED THE ACTUAL AMOUNT PAID BY YOU FOR THE DEFECTIVE PRODUCT, NOR SHALL WE UNDER ANY CIRCUMSTANCES BE LIABLE FOR ANY CONSEQUENTIAL, INCIDENTAL, SPECIAL OR PUNITIVE DAMAGES OR LOSSES, WHETHER DIRECT OR INDIRECT. EXCEPT AS COVERED BY THIS LIMITED PRODUCT WARRANTY STATEMENT, ETEKCITY CORPORATION SHALL NOT BE LIABLE FOR COSTS ASSOCIATED WITH THE REPLACEMENT OR REPAIR OF PRODUCTS PURCHASED FROM IT, INCLUDING, BUT NOT LIMITED TO, LABOR,

INSTALLATION, OR OTHER COSTS INCURRED BY THE USER AND, IN PARTICULAR, ANY COSTS RELATING TO THE REMOVAL OR REPLACEMENT OF ANY PRODUCT.

OTHER RIGHTS YOU MAY HAVE

SOME JURISDICTIONS DO NOT ALLOW FOR: (1) EXCLUSION OF IMPLIED WARRANTIES; (2) LIMITATION ON THE DURATION OF IMPLIED WARRANTIES; AND/OR (3) EXCLUSION OR LIMITATION OF INCIDENTAL OR CONSEQUENTIAL DAMAGES; SO THE DISCLAIMERS IN THIS POLICY MAY NOT APPLY TO YOU. IN THESE JURISDICTIONS YOU HAVE ONLY THE IMPLIED WARRANTIES THAT ARE EXPRESSLY REQUIRED TO BE PROVIDED IN ACCORDANCE WITH APPLICABLE LAW. THE LIMITATIONS OF WARRANTIES, LIABILITY, AND REMEDIES APPLY TO THE MAXIMUM EXTENT PERMITTED BY LAW.

ALTHOUGH THIS LIMITED WARRANTY GIVES YOU SPECIFIC LEGAL RIGHTS, YOU MAY HAVE OTHER RIGHTS IN YOUR JURISDICTION. THIS STATEMENT OF LIMITED WARRANTY IS SUBJECT TO APPLICABLE LAWS THAT APPLY TO YOU AND THE PRODUCT. PLEASE REVIEW THE LAWS IN YOUR JURISDICTION TO UNDERSTAND YOUR RIGHTS FULLY.

CHANGES TO THIS POLICY

We may change the availability of this limited warranty at our discretion, but any changes will not be retroactive.

This warranty is made by:
Etekc City Corporation
1202 N. Miller St., Suite A
Anaheim, CA 92806
USA

Customer Support

If you have any questions or concerns about your new product, please contact our helpful Customer Support Team.

Distributed by Etekcity Corporation

1202 N. Miller St., Suite A
Anaheim, CA 92806
USA

Email: support@etekcity.com

Toll-Free: 1-855-686-3835

Support Hours

Monday—Friday
9:00 am—5:00 pm PST/PDT

**Please have your invoice and order ID ready before contacting Customer Support.*

Federal Communication Commission Interference Statement – Part 15

This device complies with Part 15 of the FCC Rules. Operation is subject to the following two conditions:

- (1) This device may not cause harmful interference, and
- (2) This device must accept any interference received, including interference that may cause undesired operation.

NOTE: This equipment has been tested and found to comply with the limits for a Class B digital device, pursuant to Part 15 of the FCC Rules. These limits are designed to provide reasonable protection against harmful interference in a residential installation. This equipment generates, uses and can radiate radio frequency energy and, if not installed and used in accordance with the instructions, may cause harmful interference to radio communications. However, there is no guarantee that interference will not occur in a particular installation. If this equipment does cause harmful interference to radio or television reception, which can be determined by turning the equipment off and on, the user is encouraged to try to correct the interference by one or more of the following measures:

- Reorient or relocate the receiving antenna.
- Increase the separation between the equipment and receiver.
- Connect the equipment into an outlet on a circuit different from that to which the receiver is connected.
- Consult the dealer or an experienced radio/TV technician for help.

FCC Caution: Any changes or modifications not expressly approved by the party responsible for compliance could void the user's authority to operate this equipment.

FCC SDOC SUPPLIER'S DECLARATION OF CONFORMITY (SDOC)

Etekcitey Corporation hereby declares that this equipment is in compliance with FCC requirements. The declaration of conformity may be consulted in the support section of our website, accessible from www.etekcity.com

Notes



A5_23G03_us